



# ERAU 360

**International Edition**

*Brought to you by:  
International Student  
Programming Council*



# TABLE OF CONTENTS



## ESSENTIALS

1. Welcome to ERAU
2. Immigration Documents
  - ~ Guidelines for practical situations
  - ~ Legal issues: Student Rights
3. Student Employment & Social Security Number
4. Campus Safety & Security Department
5. Banking
6. Mobile Service



## DISCOVER

- 12-14. Special food needs
- 15-16. Things to do in Daytona
17. Off-Campus Housing
- 18-19. Finding a Safe Apartment
  - ~ Apartment Checklist
20. Shopping Smart
21. Shopping for Bedding
- 22-23. Transportation Services



## EXPERIENCE

7. Health Insurance
8. University Services
- 9-11. Driving in Florida



## GET INVOLVED

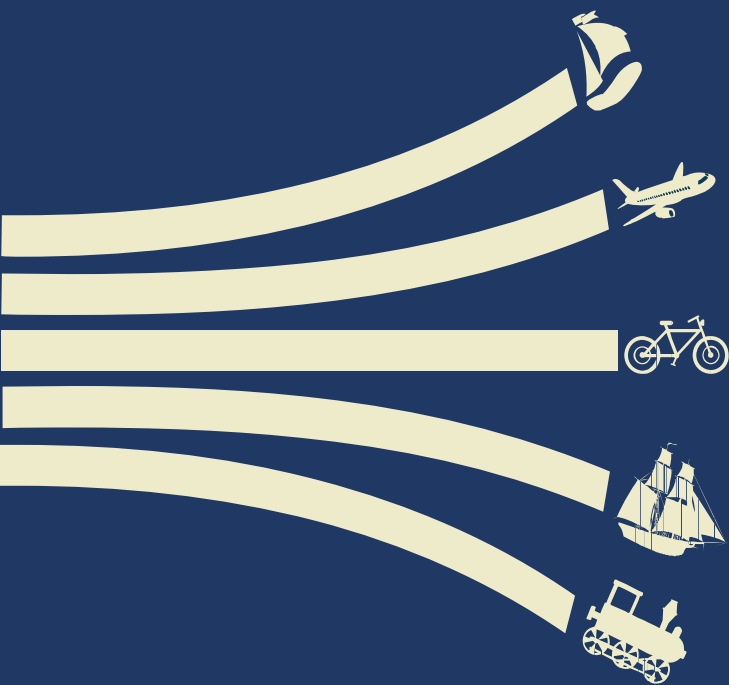
- 24-27. Who are the ISPC?

# WELCOME TO EMBRY-RIDDLE AERONAUTICAL UNIVERSITY

Coming to a new country on your own can be a daunting experience and you may have many questions about settling into your new home. We, as members of the International Student Programming Council (ISPC), have been through this first hand and decided to create this reference guide to help answer many of the basic questions we wished we knew as new international students at ERAU.

Hopefully this guide can help you as you move into what may well be the greatest and most challenging time of your life so far. So enjoy yourself, make new friends, study hard, and we will hope to see you at the next ISPC event on campus!

Sincerely and best wishes,  
ISPC



# IMMIGRATION DOCUMENTS

## PASSPORT

- Make sure you have a valid passport that has not expired.
- If your passport is about to expire you can get an extension from the Embassy while in the USA or from your own country. (Make sure to confirm that it can be renewed at the Embassy. Rules vary from country to country)

## VISA

- Ensure that your Visa is not expired before travelling.
- Renewal must be done in your home

## I-20

- MUST NOT EXPIRE.
- Extension must be done at least one month before the expiration date. To be safe, contact the SEVIS administrator well in advance - at least 60 to 90 days before expiration.
- Students with expired I-20s will have to leave the country and re-apply for a new I-20.
- Extension or renewal can be done by visiting the International Student Services Office in Building 23.
- If you change your major, make sure to inform the SEVIS administrator and get it updated on your I-20.
- The I-20 MUST be signed by the SEVIS Administrator before travelling out of the country. Make sure to approach the SEVIS administrator well in advance - 20 to 30 days prior to departure.
- Remember ALL procedures pertaining to the F-1 VISA and I-20 take a minimum of 24 hours to process.

## I-94

- An Electronic Document assigned to you during entry to the USA.
- A copy should be printed (from [www.cbp.gov/194](http://www.cbp.gov/194)) and kept when possible.
- Required for application of SSN, Driver's License, Bank Account, etc.
- In case you misplace it or it is physically damaged, seek immediate guidance from the SEVIS administrator.

## COMMUNICATION

Names and Titles; it is customary in the US to:

- Address your peers by first name.
- Address a person who has a title (Dean or Ambassador) by using that title followed by the last name.
- Address any faculty member as Professor or Mister or Miss regardless of his/her rank.

## LEGAL ISSUES: STUDENT RIGHTS AND RESPONSIBILITIES

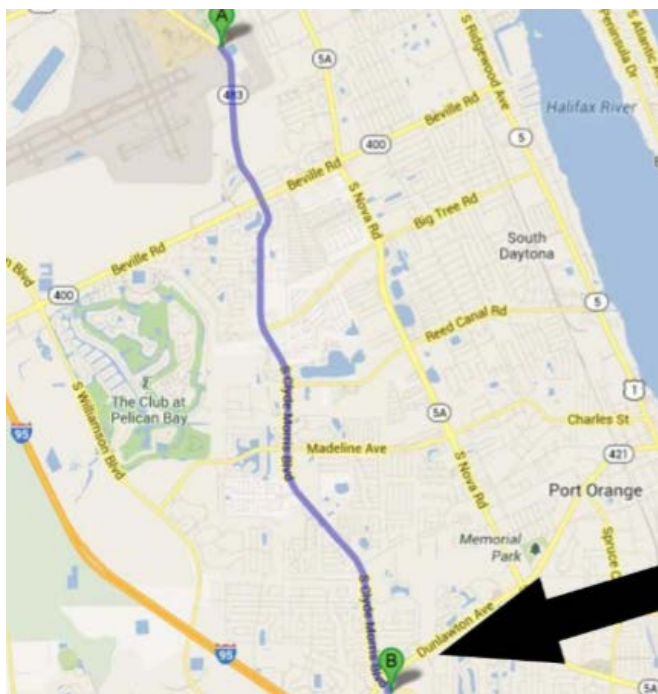
- To get help with any legal issues, ERAU Student Government Association provides Legal Eagle
  - Legal Eagle is a program designed to aid students in some of the legal issues which often arise during their college years.
- The program provides free counseling to advise students on the best course of action in difficult situations.
- Visit <http://sga.db.erau.edu/services> for more details.

# STUDENT EMPLOYMENT & SOCIAL SECURITY NUMBER (SSN)

**F**or many international students, on-campus jobs are an option and opportunities for employment can be found at the ERAU student employment center in the Tomcat Annex.

## Contact

Student Employment Office  
Tomcat Annex  
Bldg. 30. Rm. 121  
Phone: 386-682-6320  
<http://daytonabeach.erau.edu/financial-aid/student-employment/index.html>



## STEPS TO OBTAINING AN ERAU JOB:

1. Register with Student Employment.
2. Search for a job.
3. Once offered a job, obtain an official offer of employment.
4. Contact the International Student Services Office in Mod 23 to get a written letter from the school to apply for your SSN (called a memorandum of eligibility).
5. Take the following items to the social security office to obtain your SSN Checklist: Formal offer of employment; Memorandum of eligibility to work; I-20 form; Passport with valid visa; Printout of the I-94 card.
6. Take your SSN back to student employment, finish their paperwork and begin your job

## Social Security Office

4990 Clyde Morris  
Port Orange, FL 32127

# CAMPUS SAFETY AND SECURITY DEPARTMENTS

## IF YOU FIND YOURSELF IN AN EMERGENCY:

Any time the university is closed and you need to reach the International Administrator in an emergency, you may call the University Safety Dispatch Office.

If you are faced with an off-campus emergency and need to contact the Daytona Beach police, fire brigade, or an ambulance, call 911.

## IN NON-EMERGENCY SITUATIONS:

In non-emergency situations, or to file reports, you can call the Daytona Beach police at 386-671-5100.

If you need help on campus (locked out of a room, vehicle troubles, etc.) and it is not an emergency situation, you can call campus safety at: 386-226-SAFE.

## CHANGE OF ADDRESS

IF YOU CHANGE YOUR ADDRESS IN THE U.S. DURING YOUR STAY HERE, YOU CAN NOTIFY YOUR LOCAL POST OFFICE ON CAMPUS WHO WILL FORWARD ON THE MAIL FREE OF CHARGE. YOU SHOULD ALSO UPDATE THE FOLLOWING INFORMATION:

**SEVIS ADMINISTRATOR**

**DRIVING LICENSE**

**INSURANCE DETAILS**

**BANKING DETAILS**

**ANY OTHER BILLING SERVICES**

## Contact Numbers:

**University Safety Dispatch Office**

386-226-6480

**Campus safety**

386-226-SAFE (7233)

**Emergency services**

911

**Daytona Police**

386-671-5100

## TIP:

-If you are driving a vehicle in the U.S. you should carry your insurance details, license, and car registration at all times. These will be needed in the event of an accident, or if a law enforcement officer pulls you over.





# MOBILE SERVICE

Purchasing a SIM card and getting a cellphone number in the US

There's different cell phone carriers with different plans and costs. Here are a few examples of the types of plans from different carriers.

**T-Mobile**



**at&t**

**\$60/MONTH**

First 6GB at high speed

**\$40/MONTH**

First 3GB at high speed

Unlimited talk , text and data

**\$50/MONTH**

Up to 3GB 4G LTE Data

**\$40/MONTH**

Up to 5GB 4G LTE Data

Unlimited talk , text and data

**\$35/MONTH**

2GB

**\$50/MONTH**

4GB



Unlimited talk , text

There is also an option call "prepaid", which is very popular among international students.

Make sure to bring with you some sort of identification (e.g. passport, driver's license) when purchasing your SIM card.



# Health Insurance

- International students must have health insurance as enrollment requirements.
- You will be automatically enrolled in the school's health insurance plan.
- If you want to waive school's health insurance plan, the deadline approximately will be the first/second week of class.

## Steps to waive your insurance plan:

1. Prepare your insurance policy- with coverage of your insurance.
2. Go to the International Student Services Office in Building 23.
3. You can also waive your insurance online by e-mail.

## More information:

<http://daytonabeach.erau.edu/campus-services/health-services/insurance/index.html>

## Several other options if you choose other insurance:

- [www.isoa.org](http://www.isoa.org)
- Tata-aig
- [www.aetna.com](http://www.aetna.com)
- AIG

# University Services

## ERNIE ([ernie.erau.edu](http://ernie.erau.edu))

- The main website for ERAU.
- Contains Canvas, which manages your class documents, grades and assignments online.
- Eagle Card, Campus Solutions, Student Employment and many more tabs.

## NOTARY AND FAXING

- Fax Machine
  - Located at the 1st floor of the student center, in the Student Government
  - Association room (Student Center 104).
  - Phone Number: (386) 226-6083
  - Can be used domestically/internationally.
  - (International fees apply and they will be charged to your student account)
- Notary Publics
  - Available for free on campus
  - Call (386) 226-6083 before having a fax sent there.

**UNIVERSITY  
HOTLINE**

**STUDENT GOVERNMENT ASSOCIATION:**  
*(386) 226-6083*

**INFORMATION TECHNOLOGY:**  
*(386) 226-6990*

**CAMPUS SAFETY:**  
*(386) 226-6480 / (386) 226-7233 - emergency*

# Driving in Florida



## GETTING YOUR FLORIDA DRIVER'S LICENSE

In order to buy a car, whether brand new or used, you need a valid driver's license. The license also serves as an appropriate photo ID for various purposes. The license process consists of an online DMV test on road signs and road rules and a driving skills test.

## WHERE CAN I GET MY FLORIDA DRIVER'S LICENSE ?

Department of Highway Safety and Motor Vehicles  
310 Jean Street  
Monday to Friday-8am to 5pm

## HOW TO MAKE APPOINTMENTS?

<https://services.flhsmv.gov/Oasis/OnlineAppointments.aspx> or (386) 288-3140

## WHAT DOCUMENTS ARE NEEDED AT THE TIME OF APPLICATION?

- Passport with valid visa and I-94. (An electronic copy of your I-94 is available at [www.cbp.gov/I94](http://www.cbp.gov/I94).)
- I-20
- Two Proofs of Residence (On Campus: Letters of Proof of Residence from two departments; Off Campus: Lease, utility bill.)

# Driving in Florida



## IMPORTANT INFORMATION

You can drive with your international driver's license or license from your own country for up to ONE MONTH (30 days) after your arrival in the country.  
If you have a license before you arrive, you will be exempt from taking the four-hour Drug and Alcohol Traffic Awareness (DATA) course.  
For More information: [www.DMVFloida.org](http://www.DMVFloida.org)

## LICENSE PLATES, REGISTRATION AND TITLE:

### Volusia County Administration Center:

Finance Department, 250 N. Beach Street, Room 101-Tag Purchase  
and Car Registering  
(386-254-4620)



## CAR INSURANCE:

### Minimum required by the state of Florida:

Liability & Personal Injury Protection (PIP)

### Possible Discount criteria :

- Age (above 21)
- Good Grades
- Paperless Statements
- Prior Good Driving History
- Driver's Education while learning to drive.



# Driving in Florida



## BUYING A CAR:

Buying a car requires patience. Always keep an eye for special deals and take a mechanic or a person who is familiar with cars with you while exploring cars, especially used cars.



## POSSIBLE OPTIONS:

Dealerships

-Carmax.com

-Craiglist.com

-Flyers on Campus Bulletin Boards

-Car Broker

## WHILE BUYING USED CARS:

Check Kelly Blue Book

Website: (<http://www.kbb.com/>) to find fair car prices

Check Carfax

Website: (<http://www.carfax.com/entry.cfx>) for Used Car History

## PARKING ON CAMPUS:

You are required to have an ERAU Parking decal at all times in order to park on campus. You are required to park in specific parking lots which are assigned on the basis of your housing status.

**Embry Riddle Parking Decal Price:** \$90 for a year (Get it online through ERNIE)

### Requirements for Decal:

-Eagle Card

-Car Insurance Verification

-Tag Paperwork

# FOOD

## American Grocery Stores

### A. WAL-MART

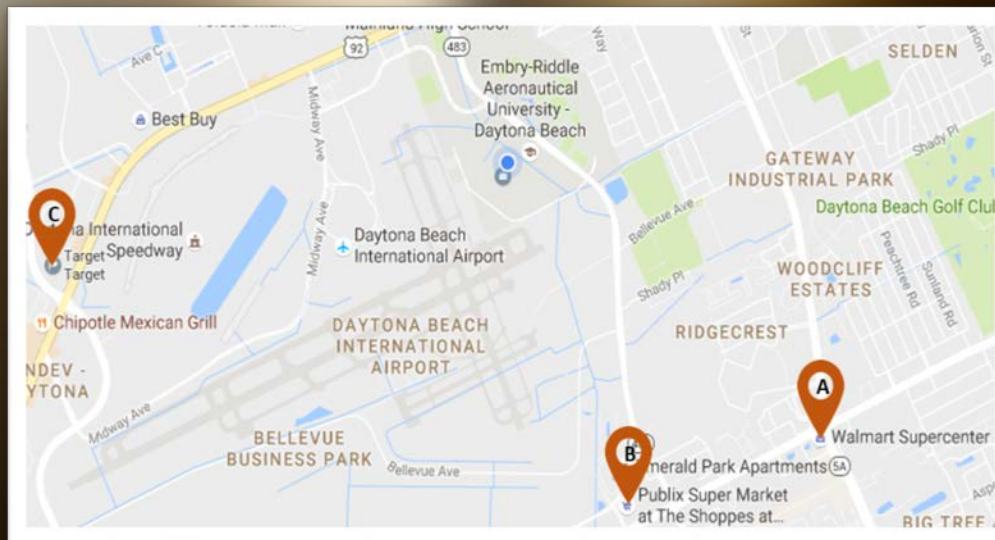
1101 Beville Rd  
Daytona Beach

### B. PUBLIX

1500 Beville Rd Ste 300  
Daytona Beach

### C. TARGET

2380 W International Speedway Blvd  
Daytona Beach



# FOOD

## Oriental Grocery Stores

### A. ORIENTAL GROCERY

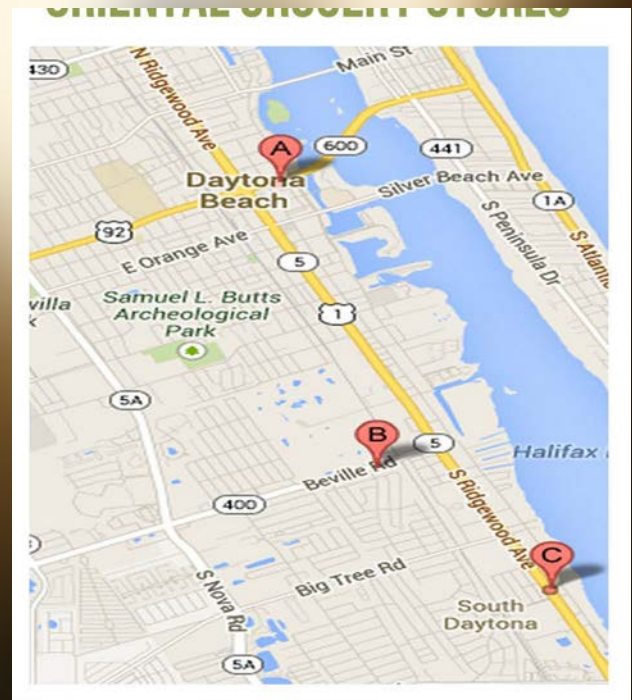
(Korean Groceries)  
135 West International  
Speedway Boulevard  
Daytona Beach

### B. COSMOS IMPORTS

(International Selection)  
858 Beville Road  
South Daytona

### C. INTERNATIONAL ASIAN MARKET

(South East Asian)  
2263 S. Ridgewood Avenue  
South Daytona



# FOOD

## Middle Eastern Grocery Stores

### PASHA MIDDLE EAST FOODS INC.

919 West International  
Speedway Boulevard  
Daytona Beach

### T J'S FISH & CHICKEN

1244 Mason Avenue  
Daytona Beach

## Indian Grocery Stores

### SEVEN STAR FOOD STORE

632 Mason Avenue  
Daytona Beach

## Caribbean & African Grocery Store

### CARIBBEAN MARKET

2006 South Ridgewood Ave.  
South Daytona

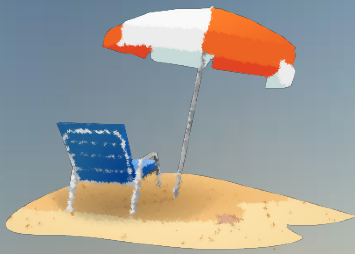
## Hispanic Grocery Stores

### PLATICA SUPERMARKET

1110 Mason Avenue  
Daytona Beach



# Things to do in Daytona Beach



## THE BEACH

"The world's most famous beach"; bask in the sunshine, play in the water, fish off the pier, or even drive on the beach.

## MUSEUM OF ARTS AND SCIENCES

Just a stone's throw away from ERAU, the MOAS includes permanent and guest exhibits as well as a planetarium. It is also free for ERAU students with an Eagle card. Located at 352 S Nova Rd

## PEABODY AUDITORIUM

This historic building is home to local performances of the London Symphony Orchestra, the Daytona Beach Symphony Society, the Daytona Beach Civic Ballet, and hosts events for local schools and colleges as well as national artists and performers. Located at 600 Auditorium Blvd.

## OCEAN CENTER

The Ocean Center is Daytona's conference and exhibit center, however it often offers concerts and events. Located at 101 N Atlantic Ave

## DAYTONA LAGOON

Daytona Lagoon is opposite of the Ocean Walk Shoppes at 601 Earl St. This entertainment center offers a water park, arcade, laser tag, mini golf, and go-karting.

## DAYTONA ICE ARENA

Located at S Ridgewood Ave, the ice arena is a great place to go ice skating with friends.

# Things to do in Daytona Beach

## DAYTONA INTERNATIONAL SPEEDWAY

The home of the famous Daytona 500. The Daytona International Speedway offers track tours, NASCAR ride experiences. It hosts the Rolex 24, Speed Week, and Bike Week races.

## SPEEDPARK

Located just behind International Speedway Boulevard (ISB) at 201 Fentress Blvd, this park offers high speed go-kart racing and an arcade.

## DAYTONA CUBS BASEBALL

Located at the Jackie Robinson Ballpark at 105 E Orange Ave. The Daytona cubs are an inexpensive and fun way to watch a local baseball game. Check their website for details.

## OCEAN WALK SHOPPES

Located on A1A at 250 N Atlantic Ave (next to the beach), the Ocean Walk Shoppes offers a variety of shops, restaurants, and a cinema. It is also located next to the band shell which hosts concerts and events throughout the year.

## BELLAIR LANES

An arcade and large dedicated bowling center, located on A1A at 2575 N Atlantic Ave.

## DAYTONA FLEA AND FARMER'S MARKET

A great place to find cheap household items and fresh produce, located at 2987 Bellevue Ave.

## VOLUSIA MALL

The Volusia mall is a large scale shopping mall in Daytona and includes three department stores and a food court.

## PORT ORANGE PAVILION

This plaza out in Port Orange offers a wide variety of dining options, shops, and a large cinema. Located at 5547 S. Williamson Blvd.

## VOLUSIA TOP GUN

State of the art indoor shooting range that's open to the public. Located on 2900 Bellevue Ave.

# Off-Campus Housing

## REQUIREMENTS

You must be either:

- A transfer student, or
- Finished with your first year living on campus

## FINDING A HOUSE

A few good places to look for houses, rooms and apartments for rent are:

- Websites like [www.apartmentguide.com](http://www.apartmentguide.com) and [www.rent.com](http://www.rent.com)
- Bulletin board notices around the school
- Advertisements on The Avion (the school newspaper)

A good rule of thumb is your rent should not be more than a third of your monthly allowance

## IMPORTANT INFORMATION

Understand the agreement between you and the landlord

Pay your rent on time

Sign a lease for the correct duration of your stay

The landlord is allowed to take you to court for owed rent or damages

# Finding a Safe Apartment



Looking for off-campus housing near your student's university campus? The right apartment can have a huge impact on your student's comfort and well-being. Here are a few things to consider in your housing search:

- \* **Proximity:** Look for an apartment close to campus, public transportation and shopping.
- \* **Amenities:** Ask whether the apartment has laundry facilities, a fitness center, common social and study areas, and parking.
- \* **Safety:** (1) Look for an apartment in a safe neighborhood and ask about the building's security features. (2) Does management respond to crime problems in and around the complex? (3) Do the sliding glass doors and windows have effective auxiliary locking devices? (4) Drive by the area at night and see if you're comfortable with the lighting levels.
- \* **Community:** Is the apartment geared towards college students living? Some student-friendly apartment complexes emphasize features that support academic success.
- \* **Management and Upkeep:** Is the apartment in good repair? Is management easily reachable and responsive to repair requests?

A key point to remember is to use the locks that you have. Forty-five percent of all burglaries are a result of open doors and windows or non-forcible entry.

For further information on this and other crime prevention programs, contact the Safety Department at 386-226-6490. Or come see Campus Safety & Security located on Mod 3.

We suggest you visit the complex at night also to check the lighting levels. Other items are prompts to ask management. Do not be afraid to request management to correct any deficiencies prior to moving in. If deficiencies are to be corrected, ensure a notation is made on the contract prior to signing.

# Finding a Safe Apartment



## Safe Apartment Questionnaire

### Door Features

- \* Have the locks been changed since the last occupant?
- \* Are the exterior doors of solid core construction?
- \* Are deadbolt locks and 180 degree peepholes installed?
- \* Are hinge pins exposed to the outside?
- \* Have exterior door strike plates been reinforced?
- \* Are sliding doors secured with auxiliary locks and/or pins?
- \* Is there excessive slack in the tracks of sliding doors?

### Window Features

- \* Are air conditioning units secured from the inside?
- \* Are windows secured with auxiliary locks and/or pins?
- \* Are jalousie windows covered with a security screen or glued to the frames?

### Lighting

- \* Is lighting adequate to identify people and illuminate hiding places?
- \* Are parking areas, stairwells, and mailboxes well lit?
- \* Is lighting maintained on a regular basis?

### Alarms

- \* Are burglar alarms installed?
- \* Are fire alarms installed?

### Miscellaneous

- \* Are trees and shrubbery trimmed from doors and windows to eliminate hiding places? Walkways and parking lots?
- \* Are apartment numbers conspicuously posted?
- \* Are miscellaneous openings to the apartment securable?
- \* Is there a security service or patrol?
- \* Is the apartment within a neighborhood watch area?
- \* Do I participate in Operation I.D.?

# Shopping Smart



## RECEIPTS

Always keep receipts, especially on pricey items, for returns or warranty claims.

## TIPPING

It is traditional when dining to tip servers approximately 15%. Stellar service often merits a higher percentage.

## SALES TAX

Florida has a sales tax of 6.5% (except for food)

## CLOTHES

Sizes in the USA are not universal, so remember to try the clothes before purchases.

## Shopping for Bedding



### LINENS

Bedding items can be found in most department stores or supermarkets such as Walmart, Target, K-Mart, or Bed, Bath & Beyond.

### MATTRESS SIZES

Twin	39 X 75" (99 X 190 cm)
Twin XL	39 X 80" (99 X 203 cm)
Full	54 X 75" (137 X 190 cm)
Queen	60 X 80" (153 X 203 cm)
King	76 X 80" (198 X 203 cm)
California King	72 X 84" (182 X 213 cm)

## Transportation Services



### TAXI

Various Taxi Service Companies can be called to pick you up.

Tips while calling a Taxi:

- Tell Dispatcher your precise location and destination.
- Ask for an approximate rate to ensure you have sufficient cash.
- Ask whether Credit Cards are accepted.
- Remember to tip the driver.



## Transportation Services



### PUBLIC BUS

VOTRAN

- Local public bus service
- Tel: (386) 761-7700

### SHUTTLE SERVICES

DOTS/DO Shuttle

- Shuttle bus service from Orlando to Daytona Beach
- Tel: DOT Shuttle (386) 257-5411, DO Shuttle (386) 947-9947

### INTERCITY BUS SERVICES

Greyhound

- Tickets must be booked and paid for 24 hours in advance
- Tel: (286) 255-7076



# ISPC

International Student Programming Council

Congratulations on your admission, and welcome to the ERAU Family!

So what's the next step? We are here to help!

# About ISPC

International Student Programming Council (ISPC) is a student-run organization within the department of Student Engagement & Student Union. We conduct social events, foster camaraderie, and help provide support for our fellow international students!



ISPC Annual World Fest

GET INVOLVED

## Mentorship Program

Unsure about what to pack in your luggage? Do you want to know more about the Embry-Riddle experience through the eyes of the current students? Join ISPC's Mentorship Program, and we'll have a mentor ready to answer your questions and help you navigate your time in Daytona Beach. Sign up for the program during International Student Orientation! We're excited to meet you!

## Events and Activities

There are many fun things to explore around Daytona Beach. Theme parks such as Walt Disney World and Universal Studios, the natural beauty of beaches and springs, and shopping destinations in premium outlets are all in the vicinity. ISPC organizes discounted trips each semester, so be sure to join us for exciting adventures!



Thanksgiving Dinner Photo booth



Universal Studio Trip



Intl. Student Orientation

## Want to Know More?



[dbispc@erau.edu](mailto:dbispc@erau.edu)



ERAU International Student Programming Council



International Student Programming Council



[ispc.eraudb](https://www.instagram.com/ispc.eraudb)



FALL 2016

1ST ISPC GENERAL MEETING

SEP **05** ✈️ 5:00-6:00  
COB 126

*We hope you can join us*

1ST ISPC MENTORSHIP PROGRAM MEETING

AUG **29** ✈️ 5:00-6:00  
COB 126



International Student Programming Council



ERAU International Student Programming Council



ispc.eraudb